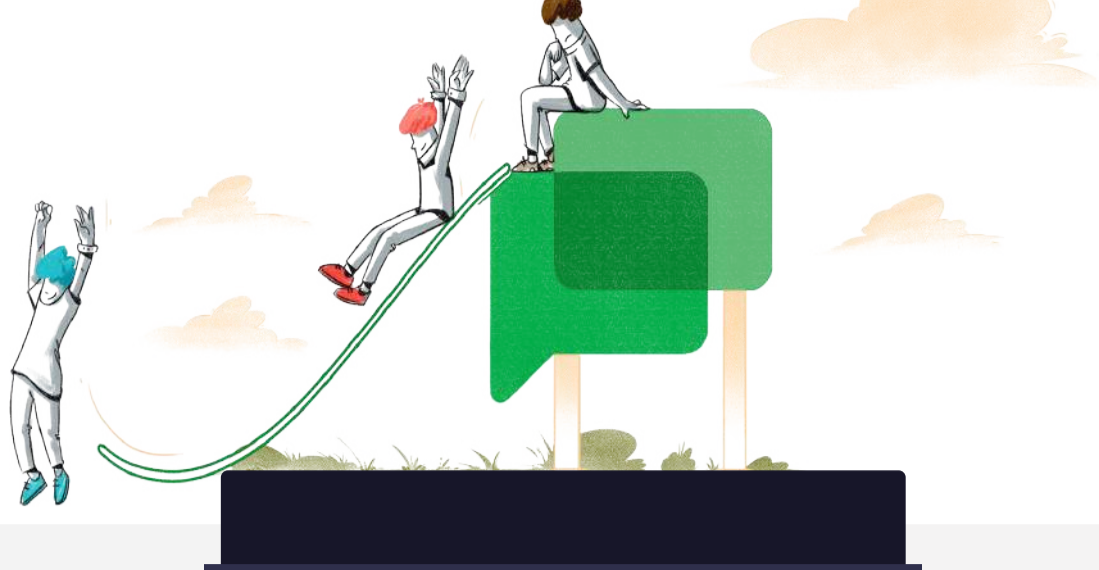


# The best Google Chat alternative for team collaboration



| Zoho Cliq     |   | Google Chat      |
|---------------|---|------------------|
|               | <b>SECURITY</b>   |                  |
| ✓             | SSL encryption  | ✓                |
| ✓             | Two-factor Authentication   | ✓                |
| ✓             | SAML based Single Sign On (SSO)   | ✓                |
|               | <b>MESSAGING SPACE</b>  |                  |
| ✓             | Channels (Organization, Team, Personal)   | ✓                |
| ✓             | Multi-team Channels   | ✗                |
| ✓             | Individual Channel Permissions  | ✗                |
| ✓             | Chat Storage (Unlimited Messages)   | ✓                |
| ✓             | Mark a Chat as Unread   | ✓                |
| ✓             | Edit Message  | ✓                |
| ✓             | Delete Message  | ✓                |
| ✓             | Read Receipts   | ✓                |
| ✓             | Star/Favorite Messages  | ✗                |
| ✓             | Mention a User  | ✓                |
| ✓             | Group Mentions  | ✗                |
| ✓             | Fork Chat   | ✗                |
| ✓             | Threaded Conversations  | ✓                |
|               | <b>FEATURES</b>   |                  |
| ✓             | Multi-chat view<br><small>(Engage in more than 1 chat at a time)</small>  | ✗                |
| ✓             | Pin/Favorite Message in a Chat  | ✗                |
| ✓             | Pin/Favorite Chats  | ✓                |
| ✓             | Searchable Chat History   | ✓                |
| ✓             | Advanced Search with Search Tags  | ✗                |
| ✓             | Search for Users with their Department and Designation  | ✗                |
| ✓             | Chat Off Record   | ✓                |
| ✓             | Chat with Users outside your Organization   | ✓                |
|               | <b>FILE SHARING AND STORAGE</b>   |                  |
| ✓             | File Sharing  | ✓                |
| ✓             | Media Gallery   | ✓                |
| (100 GB/User) | File Storage Capacity   | ✓                |
|               | <b>AUDIO AND VIDEO COLLABORATION</b>  |                  |
| ✓             | 1:1 Audio Calls   | ✗                |
| ✓             | 1:1 Video Calls   | ✓                |
| ✓             | Screen Sharing  | ✓                |
| ✓             | Video Streaming (Live Video Broadcasting)   | ✗                |
| ✓             | Group Calling (Audio, Video)  | ✓                |
| ✓             | Call History  | ✗                |
| ✓             | Scheduled Meetings  | ✓                |
|               | <b>REMOTE WORKING CAPABILITIES</b>  |                  |
| ✓             | Check-in and Check-out  | ✗                |
| ✓             | Auto status updates based on your activity  | ✗                |
| ✓             | Department View<br><small>(See your teammates who're available and busy)</small>                                  | ✗                |
| ✓             | Live Video Feed   | ✗                |
| ✓             | User Availability and Time Tracking Reports   | ✗                |
|               | <b>TASK AND EVENT MANAGEMENT</b>  |                  |
| ✓             | Reminders   | ✗                |
| ✓             | Event Scheduling  | ✓                |
| ✓             | Default Calendar Sync   | ✓                |
|               | <b>INTEGRATIONS</b>   |                  |
| ✓             | Service Integrations<br><small>(Zoho and Third-Party Apps)</small>  | ✓                |
|               | <b>DEVELOPERS TOOLS</b>   |                  |
| ✓             | Build your own applications with Automation Tools<br><small>(Commands, Bots, Message Actions, Schedulers)</small> | ✓                |
| ✓             | In-built Developer Platform   | ✓                |
|               | <b>ADMIN CAPABILITIES</b>   |                  |
| ✓             | Org directory with departments and designations   | ✗                |
| ✓             | Module level granular permissions   | ✗                |
| ✓             | User Roles and Policies   | ✗                |
| ✓             | Rebranding and Customization  | ✗                |
| ✓             | Custom Domain   | ✗                |
| ✓             | Message Export<br><small>(Export Conversations including 1-1 Chats)</small>                                       | ✓                |
| ✓             | Enterprise Mobility Management  | ✗                |
|               | <b>PERSONALIZATION</b>  |                  |
| ✓             | Themes  | (Light and Dark) |
| ✓             | Rearrange Navigation Sidebar  | ✗                |
| ✓             | Notification Preferences  | ✓                |
|               | <b>APPS</b>   |                  |
| ✓             | Mobile Apps (iOS, Android)  | ✓                |
| ✓             | Desktop Client (MacOS, Windows, Linux, Fedora)  | ✓                |
|               | <b>SUPPORT</b>  |                  |
| ✓             | Phone   | ✓                |
| ✓             | Email   | ✓                |
| ✓             | Live Chat   | ✓                |